

Product Update

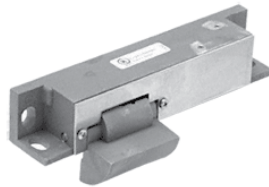
Panic Devices with Electric Strikes Now Offered with Latchbolt Monitoring

For enhanced security, ASSA ABLOY Glass Solutions PDU8000 Series panic devices can now provide latchbolt monitoring when used with Folger Adam 310-1 electric strikes.

When the latchbolt is disengaged from the strike, a signal is sent to the access control system indicating that the door is not latched and unsecure.

Folger Adam 310-1 Product Features

- Tamper-resistant, heavy duty construction
- Static strength 1,500 lbs.
- Dynamic strength 70 ft-lbs.
- Endurance rating 1 million cycles
- ¾" keeper depths
- Non-handed
- Fail secure (standard)



How to Order: Add -LCBMA to the electric strike keeper or check the LCBMA option under strikes on the PDU8000 panic device order form.

The panic device is sold through ASSA ABLOY Authorized Channel Partners only. For pricing, see the price book on the DSS Extranet or contact Glass Solutions. Accepting orders immediately. The standard lead time of 10 business days will apply.

For additional information, contact your local sales representative, ASSA ABLOY Door Security Solutions Representative, or Glass Solutions Customer Service at 855-594-6989.